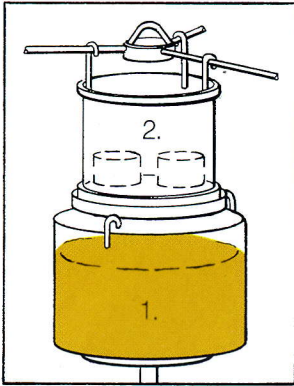


3-PHASE SYSTEM

A typical sequence of operation for the 3-Phase System is as follows:

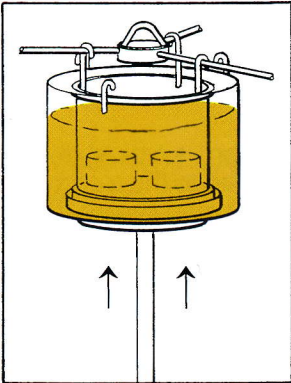
Phase I: EVACUATION



1. An open-top reservoir (resin bowl) of impregnating medium is placed on a raise/lower table in the bottom of the chamber.

2. A basket of parts or individual components to be impregnated is suspended in the top area of the chamber above the reservoir bowl assembly.

Phase II: SUBMERSION

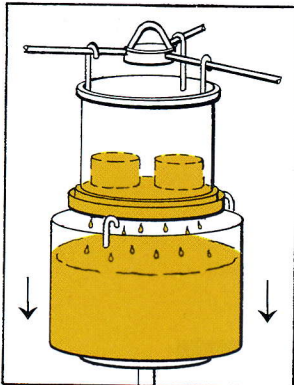


3. After the dry vacuum cycle is completed, the table with the reservoir bowl assembly is raised to flood parts.

4. A wet vacuum "soak" cycle could be utilized.

5. The pressure cycle is then begun.

Phase III: EMERGENCE



6. After the pressure cycle is completed, the chamber pressure is vented, the table is lowered away from the parts for drip-off purposes, and impregnated parts are then removed.